

PROJECTES

ESTACIÓ BIOLÒGICA DEL MONTSENY

LAB BUILDING PROJECT

Volunteers of Montseny Bird Station used recycled wood to build 180 nest boxes for birds, each of them was given an individual code for better track and organization of data later. They were placed at three different altitudes to check various habitats (deciduous, coniferous and sclerophyll forests) and determine where the boxes are needed and used the most.

Throughout the years, the data can indicate if there is any change in birds' behaviour impacted by climate and habitat changes. During the breeding season (from April) the boxes are monitored regularly for any presence of birds. Found nests are checked more often, and all spotted chicks are ringed and reported on [nius](#). The project will continue throughout the years, therefore the boxes have to be cleaned (and/or repaired) before the next breeding season. Subsequently, volunteers repeat yearly the whole process according to the schedule.



PROJECTE DOTTERELS

Dotterel is one of the species Montseny Bird Station takes censuses of, starting from the end of August until the middle of October. The habitats they are most probably going to stop during their migration journey, like peaks of rocky mountains, are searched by volunteers every week. Found individuals are counted and reported on [ornitho](#).

Other collected data includes the number of people and dogs (leashed/unleashed) from each location. During this kind of expedition a full list(s) on [ornitho](#) is always done including all other species that were spotted. The main reason for this project is to determine their migration paths and its changes. Subsequently, volunteers repeat the whole process when the time is right each year.

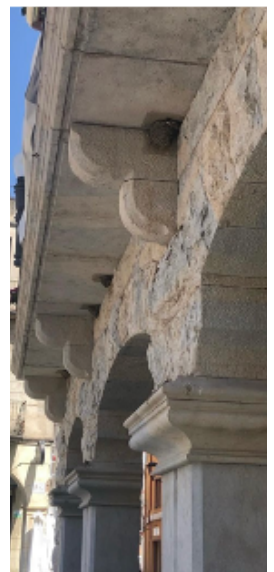


PROJECTE ORENETES

Projecte Orenetes is one of the citizen science projects organized by [ICO](#) (Catalan Ornithological Institute) that began in 2007. It helps to cover big areas at the time and results in large amounts of data about House martins' nests locations. The project starts every year in May, and it lasts until the end of July.

One of the main goals of the project is to determine the number of House martins' nests in different towns and cities in the Catalan countries each year. This data will allow us to notice over time changes in House Martin population, their preferred habitats and help to protect the species. Participation in this project helps to build a better relationship between people and nature. All reported nests are protected under government law with the support of local rangers.

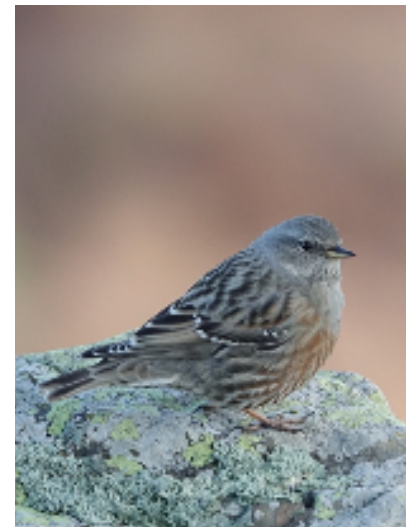
Montseny Bird Station participates and checks cities and towns around the Montseny Natural Park, recording them on [orenetes](#). Volunteers participate at the stated time each year.



ALPINE ACCENTORS MONITORING

The habitats Alpine accentors are most commonly observed in are searched by volunteers of Montseny Bird Station twice a week (from November until March), like peaks of mountains (Matagalls, Turó de l'Home and Les Agudes). Found individuals are counted and reported on [ornitho](#). If possible, some of the birds are captured and ringed.

The main objectives of this project are to determine the populations of the species in different parts of the mountains and if this area is suitable for them in the long-term; meaning, how many individuals come to the same places and what their age structure is. To be able to specify all that information, it is required to read the rings and register the data on [marquespecials](#). During this kind of expedition a full list(s) on [ornitho](#) is always done including all other species that were spotted (especially snow finches and snow buntings). Subsequently, volunteers will repeat the whole process at the proper time each year.



Pic. Valentin Jego



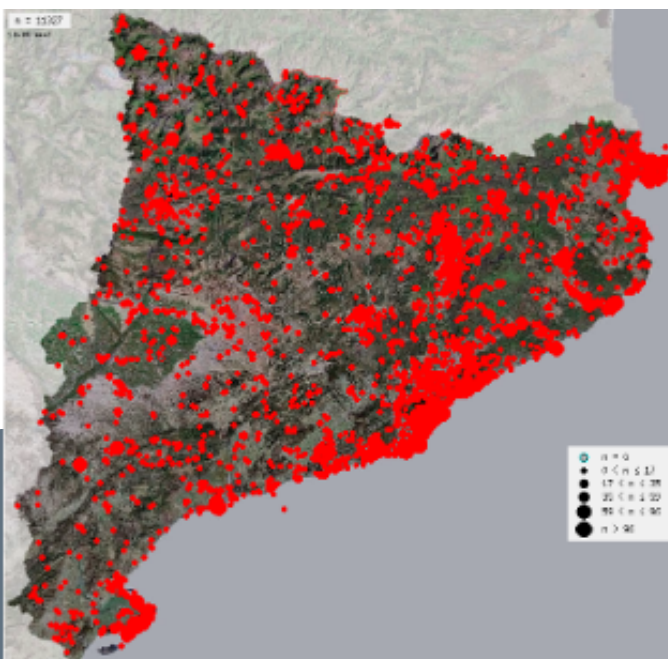
COMMON REDSTART MONITORING

Common redstart is one of the species Montseny Bird Station makes censuses of, starting from May until June. The habitats are searched by volunteers once per breeding season (Viladrau, Santa Fe). Found individuals are counted and reported on [ornitho](#).

During this kind of expedition a full list(s) on [ornitho](#) is always done including all other species that were spotted. The main interest of this project is to monitor the species colonization of areas in and around Montseny Natural Park. This species started breeding in those areas less than 10 years ago, and by collecting data about them, volunteers will increase current knowledge of colonization. Volunteers repeat the censuses at the proper time each year.



Pic. Ramon Prat Espelt



Map: Ornitho.cat

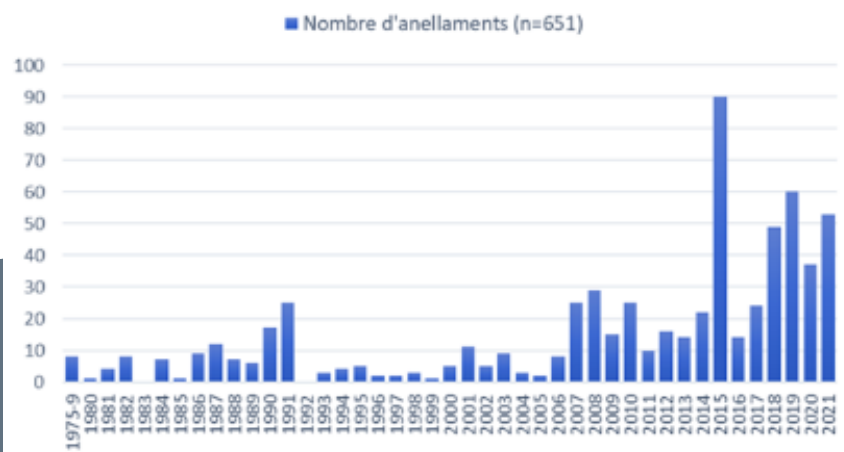


NORTHERN WHEATEAR MONITORING

Starting in the breeding season (spring) volunteers of Montseny Bird Station make censuses of Northern wheatear. The habitats they are mostly observed in, like Matagalls and Pla de la Calma, are searched by volunteers every week. Found individuals are counted and reported on ornitho. During this kind of expedition, a full list(s) on ornitho is always done with all other species that were spotted. The main target of this project is to analyse changes in Northern wheatear's populations on Montseny's alpine meadows. Montseny's peaks as well as Pyrenees' will be possibly affected in the same way by climate changes; meaning that studying this bird's population changes on lower elevation mountains will give an idea of what could happen on higher elevations later. Then the whole process is repeated by volunteers each year.



Pic. Ramon Prat Espelt



Graph: SIOC.CAT



BIG NEST BOXES

Volunteers of Montseny Bird Station build nest boxes for bigger birds like owls and kestrels. Because of the habitat of these birds, they were placed on high points on farms (with the agreements from farmers). Boxes are monitored for the presence of birds regularly, and if any chicks are detected they are ringed in June/July. One of the reasons for this project is to raise farmers' awareness of the importance of diversity and try to bring them closer to wild life.



Pic. Joan Safont

OWL CENSUS

Tawny owl's population is monitored in Montseny Natural Park by the volunteers of Montseny Bird Station. The project is done throughout December and January once a week after the sunset, considering the nature of the birds. It starts with driving through Montseny Natural Park's roads and stopping every kilometre. At each stop, a recording of a tawny owl's call is played through the speaker while volunteers wait for a response from the owls - reporting each of them. Volunteers will repeat the whole process each year.



Pic. Jordi Rodellar



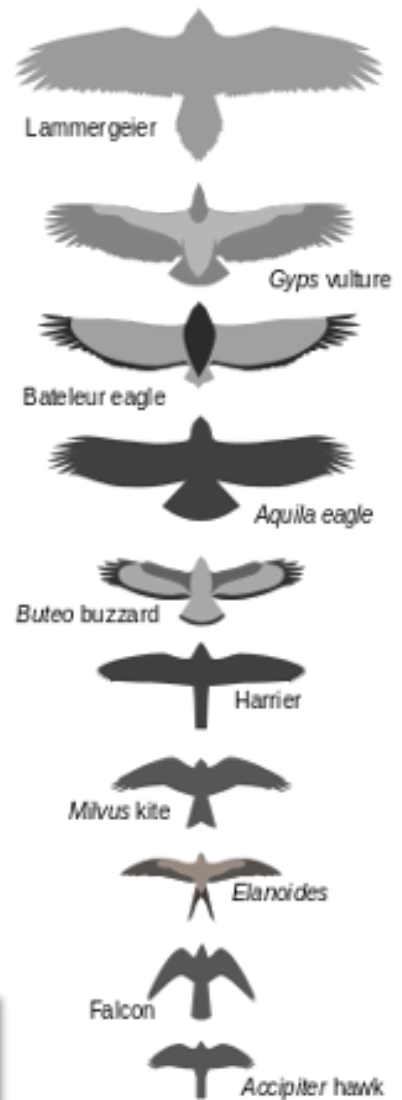
CONSTANT EFFORT RINGING STATION (SYLVIA)

The SYLVIA project (constant effort ringing station) is an [ICO's](#) (Catalan Ornithological Institute) initiative focused on collecting information on terrestrial birds in Catalonia by scientific ringing. As a consequence, it's possible to obtain long-term population trends and demographic parameters of the birds. Montseny Bird Station has their own constant effort ringing station to participate in the project, with ten nets set up in El Puig. Preparation of the project involves preparing the area, cutting bushes, and setting the nets. Ringing with volunteers only ever happens with a professional ringer present. Ringing is carried out once a month in winter (December to February), as well as once a fortnight from May to July.



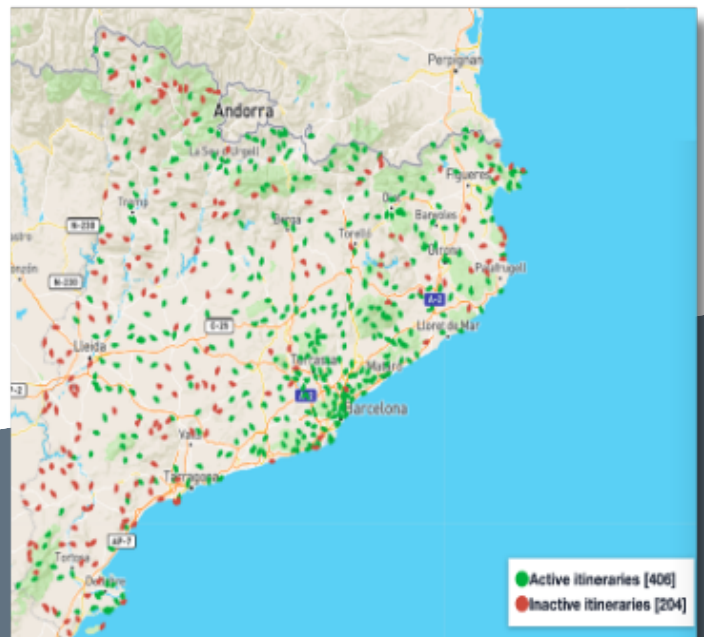
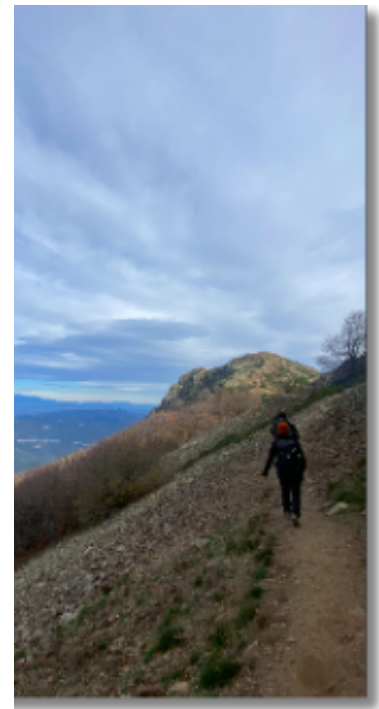
SEGRE PROJECT (RAPTORS)

It's a project that aims at finding raptors' breeding territories in the Catalan Natural Parks to detect and monitor population changes. In order to help the rangers in Montseny Natural Park volunteers of Montseny Bird Station do censuses at Sant Pere d'Esplà and at Castell de Montsoriu. It also includes looking for raptors at Matagalls and Turó de la Cova. The project lasts from March until mid-July, and in total eight censuses are done in this time.



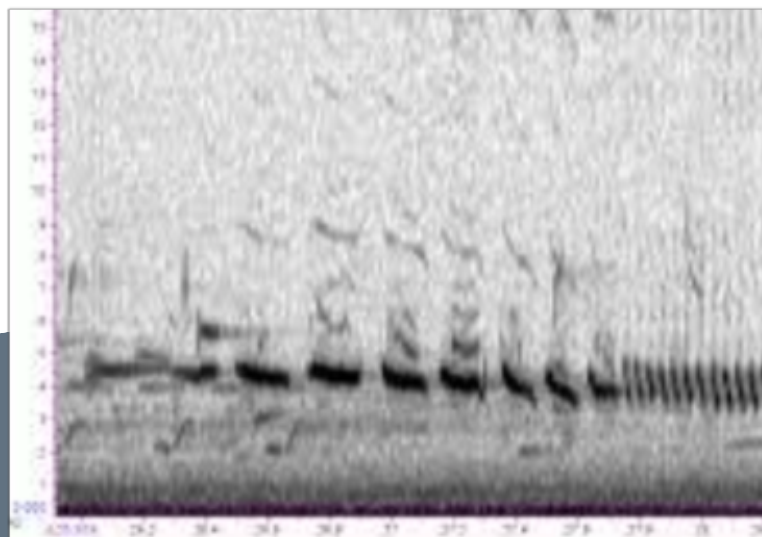
COMMON BIRDS SURVEILLANCE (SOCC)

This project is an [ICO's](#) (Catalan Ornithological Institute) initiative created to detect population trends in various habitats across Catalonia in the winter and breeding seasons. The methodology starts with a straight transect, of three kilometres walk. During this time, it is required to report all bird species detected by hearing or sight on ornitho. It is done once in December, January, April, May and June. It is a citizen science project that encourages people to take part and promote habitats' protection. Volunteers of Montseny Bird Station participate doing at least one of the available itineraries.



NOCMIG

For two weeks during migration season, volunteers of Montseny Bird Station put a sound recorder in one of the station's spots, in El Puig. It is possible to hear the migratory passerine birds that fly nearby the area and recognize them based on their calls. The recorder is set up to start one hour before sunset and stop one hour after sunrise to only register migratory birds that fly at night. Volunteers will collect all data and check for patterns or trends throughout the years.



MARQUES ESPECIALES

This project doesn't target one specific species, but focuses on finding birds with coloured rings. It is done throughout the whole year any time a bird with a ring is found by volunteers of Montseny Bird Station. After noticing the bird, it is obligatory to report it on the [project's website](#). The rings can be found in different colours in different species that represent independent projects. This methodology makes it easier to control and report birds because they don't need to be captured to read the ring, so the rate of control is much higher, thereby making it easy to recreate a bird's life-history.



🏠 - Observations of birds with special marks

Portal for reporting birds with colour marks


From this portal you can report quickly and easily your field sightings of birds with colour rings or special marks.

The site allows you to do the following:

- Report your sightings.
- View and manage your data.
- View, map and export the records of the birds you have observed.

What kind of data can be reported?

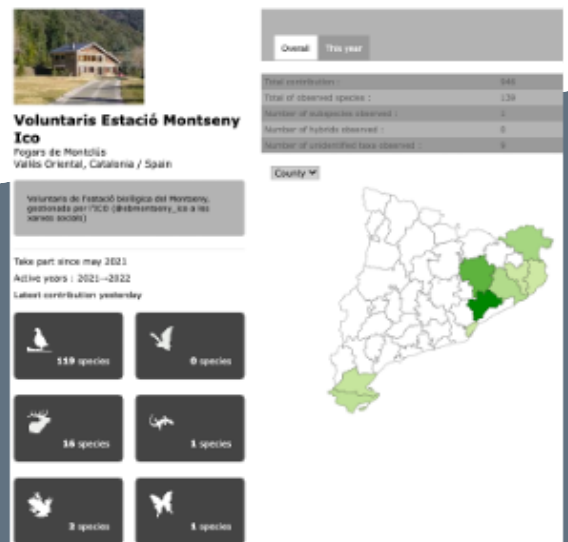
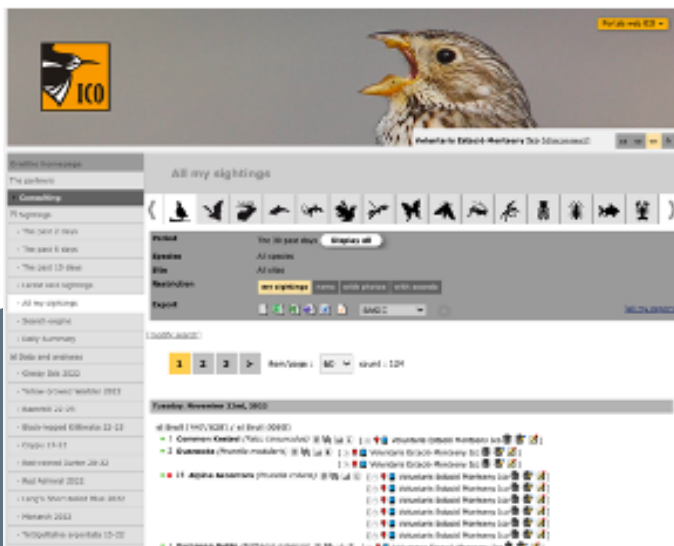
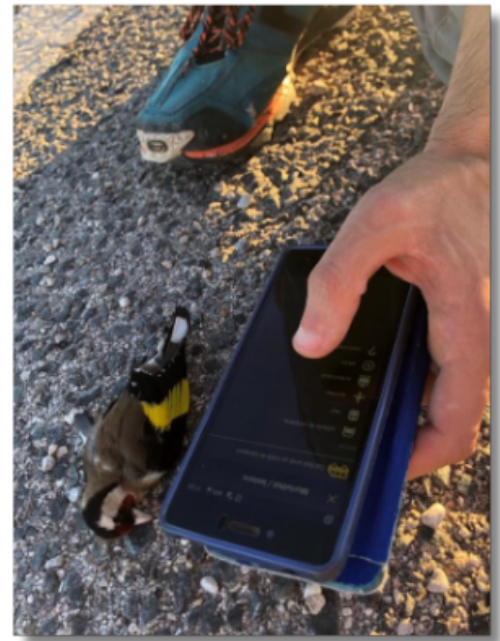
The portal allows you to report any sighting of a bird with a single special mark. It can be of any type (e.g. a plastic ring or a wing tag), although it is essential that the mark has an unique alphanumeric code.



[Enter data -](#)

ORNITHO LISTS + MORTALITY MODULE

One of the most used tools by volunteers of Montseny Bird Station is ornitho.cat. Whenever volunteers do any kind of field work, they always try to make a list(s) on this platform. All of this data of observed birds can be used in different ways by scientists. Most of the lists by volunteers are done within Montseny Natural Park, usually they do full lists to enter their observations but sometimes casual data is also added on different occasions. The main idea is to encourage them (and other people) to participate in citizen science projects and consider becoming more active in those kinds of programs. Each time volunteers observe a dead or wounded animal, they put it on the website with specific annotation for mortality mode to help the rangers maintain the park better.



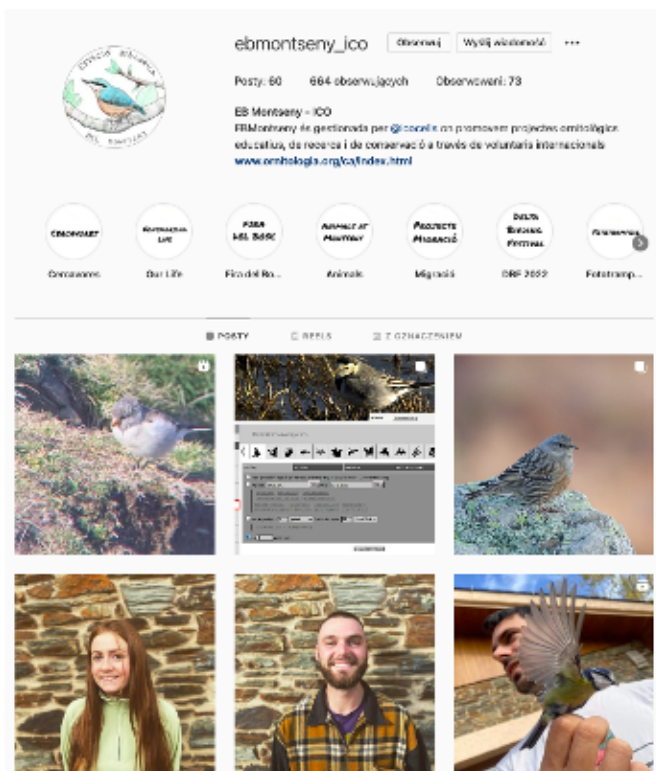
OCELLS DELS JARDINS

Ocells dels jardins is a project similar to ornitho focused on censuses in the garden. It is a citizen science project that makes it possible to obtain and share the data from people's gardens. Volunteers of Montseny Bird Station do two incomplete lists a week (spring, summer, autumn) or three times a week (winter) in Fontmartina garden for at least 30 minutes each time and report it on [this website](#). Twice a year the census is done by everyone who participates simultaneously, it takes place in the last weekend of January and May.



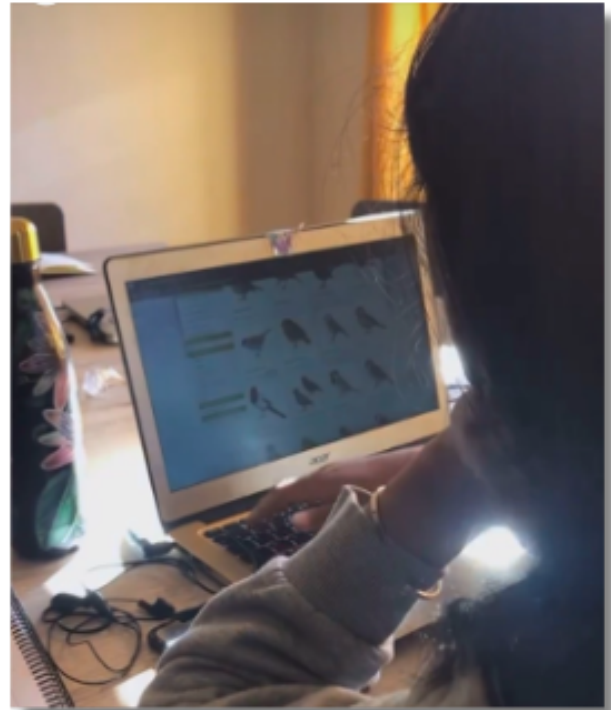
SOCIAL MEDIA

One of the volunteer's responsibilities is to create two posts a week for social media platforms. They give information about current and future projects done by Montseny Bird Station. They are always done in English and Catalan to reach both global and local communities. Additionally, for recent events or promotions of other accounts stories on Instagram and Facebook are done more randomly. The platforms volunteers use each time are [Instagram](#), [Facebook](#) and [Twitter](#).



DATA ENTRY

Entering collected data onto specific websites is one of the volunteers of Montseny Bird Station's tasks. It includes entering data from most of the projects into ornitho.cat, ocellsdelsjardins.cat, marquesespecials.cat or into their own files. Organized and categorized data can be used later for reports, social media or by other people in different projects. This duty is usually done with any spare time during the whole year when other projects don't require volunteers' attention.



marquesespecials.cat/en/sightings/new/

Observations of birds with special marks

Fill the details of the observation

Validation* Accepted

Date* dd/mm/yyyy

Hour* hh:mm

Species* Select...

Inscription* Only letters and numbers

Colour of the mark* Select...

Colour of the code* Select...

Reading order* Unknown

Type of mark* Select...

Age* Unknown

Sex* Unknown

Status* Unknown

Condition* Select...

Observers* Carlos Dalà / Franck

Comments

* Mandatory fields

Cancel Save and exit Save and add a photo Save and add a new sighting

Camera trap

Plik Edytuj Widok Wstaw Formatuj Dane Narzędzia Rozszerzenia Pomoc

F2582 Bird

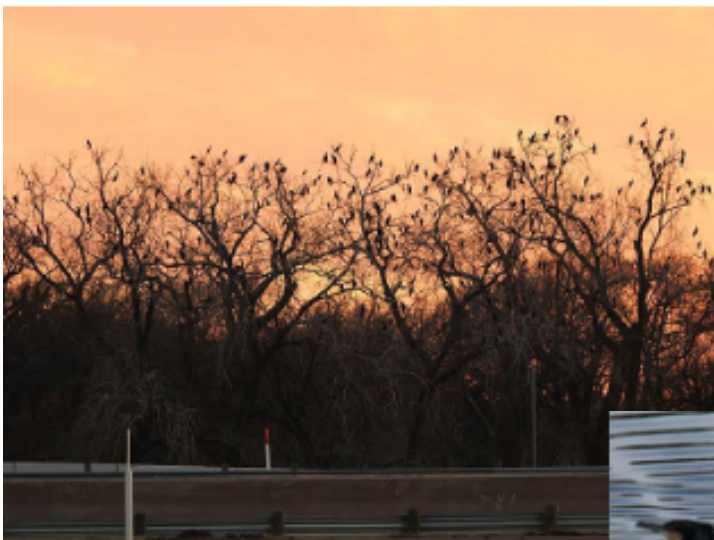
	A	B	C	D	E	F
1	Date	Time	Place	Season	Species	Taxon
2594	31/08/2022	08:41	Table feeder	Summer	Robin	Bird
2595	31/08/2022	08:45	Table feeder	Summer	Chaffinch	Bird
2596	31/08/2022	19:31	Table feeder	Summer	Chaffinch	Bird
2597	01/09/2022	14:08	Table feeder	Summer	Chaffinch	Bird
2598	01/09/2022	17:56	Table feeder	Summer	Chaffinch	Bird
2599	01/09/2022	17:57	Table feeder	Summer	Chaffinch	Bird
2600	01/09/2022	19:42	Table feeder	Summer	Chaffinch	Bird
2601	01/09/2022	19:44	Table feeder	Summer	Chaffinch	Bird
2602	02/09/2022	08:11	Table feeder	Summer	Robin	Bird
2603	02/09/2022	12:13	Table feeder	Summer	Chaffinch	Bird
2604	02/09/2022	14:52	Table feeder	Summer	Chaffinch	Bird
2605	02/09/2022	14:57	Table feeder	Summer	Chaffinch	Bird
2606	02/09/2022	16:48	Table feeder	Summer	Chaffinch	Bird
2607	02/09/2022	19:57	Table feeder	Summer	Chaffinch	Bird
2608	03/09/2022	08:08	Table feeder	Summer	Chaffinch	Bird
2609	03/09/2022	08:49	Table feeder	Summer	Chaffinch	Bird
2670	03/09/2022	08:55	Table feeder	Summer	Blue tit	Bird
2671	03/09/2022	08:55	Table feeder	Summer	Blue tit	Bird
2672	03/09/2022	08:31	Table feeder	Summer	Robin	Bird
2673	03/09/2022	09:13	Table feeder	Summer	Nuthatch	Bird
2674	03/09/2022	09:15	Table feeder	Summer	Nuthatch	Bird
2675	03/09/2022	09:18	Table feeder	Summer	Nuthatch	Bird
2676	03/09/2022	09:25	Table feeder	Summer	Nuthatch	Bird
2677	03/09/2022	09:26	Table feeder	Summer	Nuthatch	Bird
2678	03/09/2022	09:28	Table feeder	Summer	Nuthatch	Bird

ROOSTERS

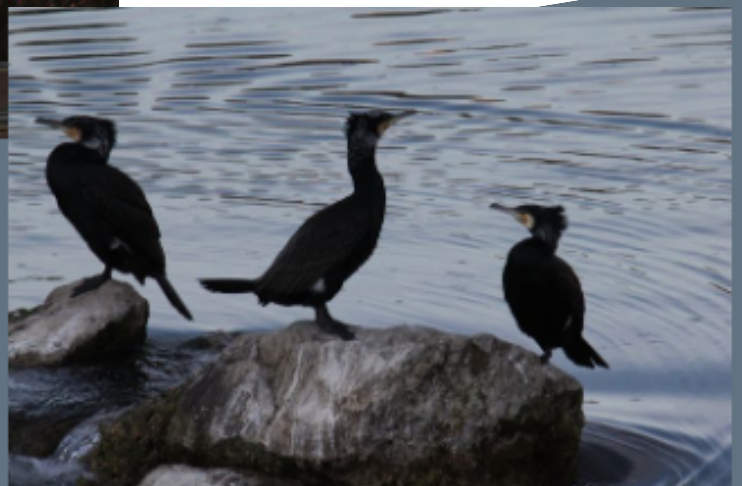
At all times, volunteers of Montseny Bird Station keep in the back of their minds the rooster project. There are species in Montseny Natural Park that are known for sleeping in roosters; meaning a big group of birds on one place. Volunteers' task is to locate the roost of crows, ravens or cormorants in the park and count the individuals in them. It would be necessary to wait until sunset, when all of them come back to the same roost to rest. They would be registered on [ornitho](#), and it would help to determine their population in the park.



Pic. Màrius Domingor



Pic. Chris Jacksonr



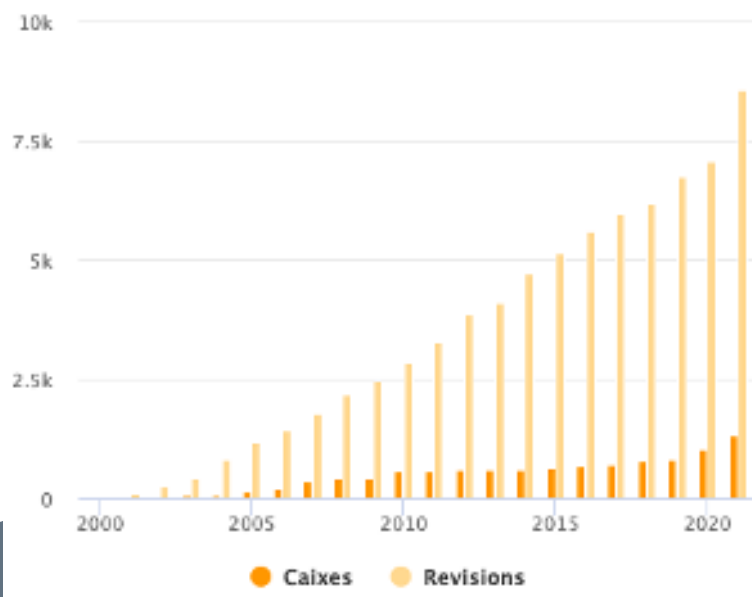
Pic. Ruben Betrian

CHIROBOXES

Volunteers of Montseny Bird Station also participate in projects of different organizations if possible. ChiroBoxes is one of the initiatives of [the Granollers Museum of Natural Sciences](#). This bat monitoring focuses on fissure-dwelling bats using a network of bat boxes. Due to the lack of mature forests with old trees and the increasing presence of altered habitats, the availability of natural roost has dramatically decreased. Bat boxes are a compensatory measure, and therefore should not be used as a definitive replacement for natural roosts. There are five bat boxes in the Fontmartina garden that volunteers check regularly and report on the website.

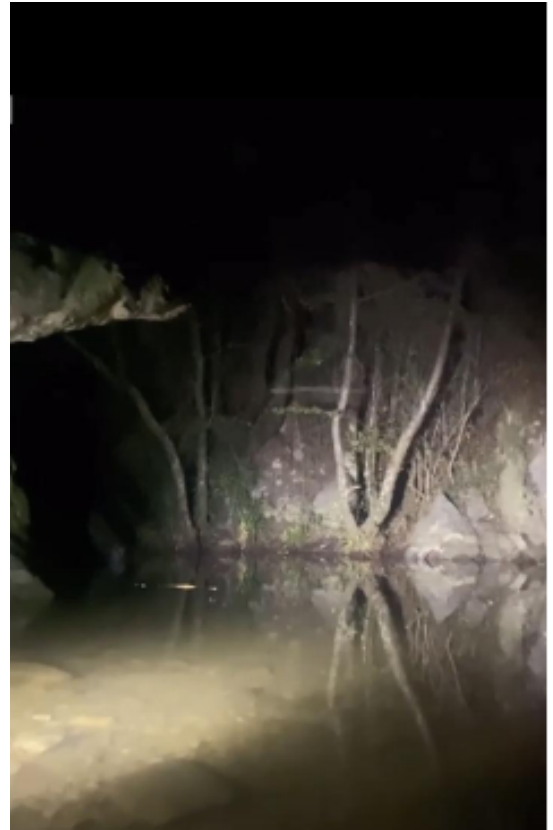


[Evolució del nombre de caixes i revisions]

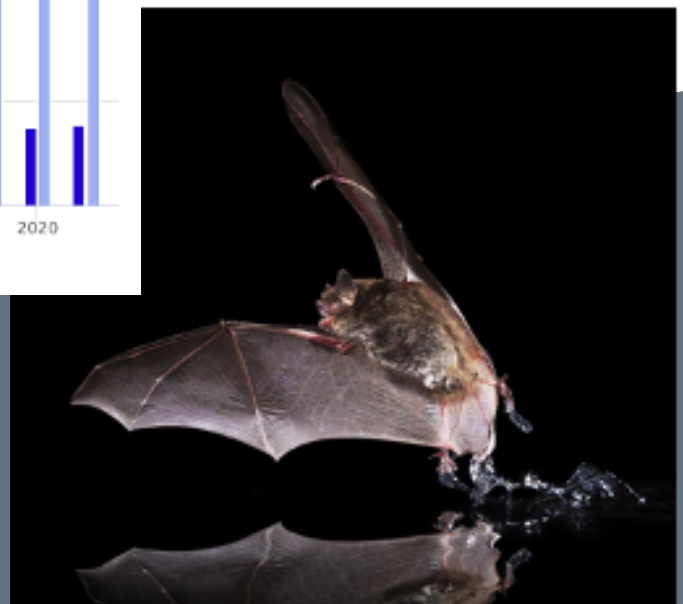
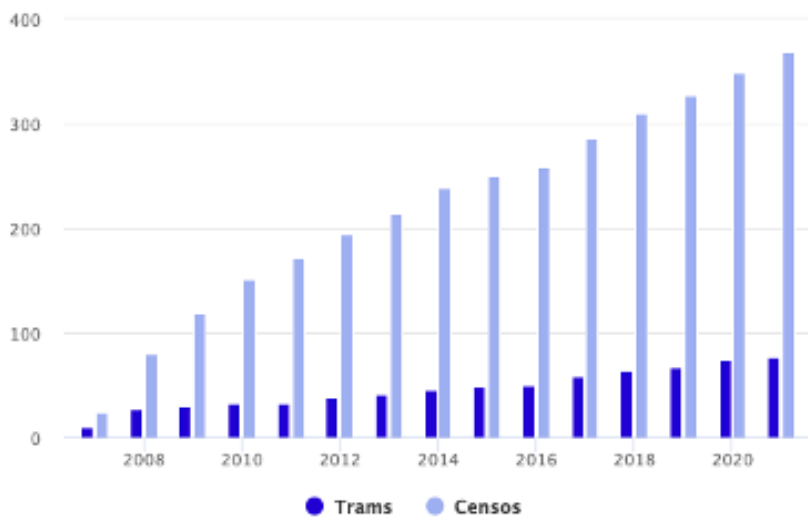


BATRIVERS

Volunteers of Montseny Bird Station also participate in projects of different organizations if possible. ChiroRivers is one of the protocols of the Granollers Museum of Natural Sciences of bats in aquatic ecosystems. Through the monitoring of bat populations along the rivers, we can detect changes in the ecological quality of water and riparian forests. Volunteers determined one of the river's four points on Cànoves river to check the bats. Censuses are done twice a year at night, once in June and once in August.



Evolution of the number of boxes and revisions



DORMOUSE PROJECT

Volunteers of Montseny Bird Station also participate in projects of different organizations if possible. The Liró project is one of the Granollers Museum of Natural Sciences' initiatives. Through this monitoring, we can gain knowledge about the species' situation in Catalonia and how the park can be managed to preserve biodiversity. There are multiple stations for the dormouse project, six of the nest boxes are located in one of the beech forests in Montseny Natural Park, and they are checked by volunteers once a month from July to October. If possible, found rodents are tagged with a small metal ear tag by the project's organisers.



BUILDINGS AND GARDEN MAINTENANCE

Volunteers of Montseny Bird Station live in Fontmartina, which means their daily lives happen around the station's properties. Their tasks are to take care of the buildings and garden: cleaning all rooms, plant removal (including invasive species), refill feeders in the winter, refill water in the drinker, prepare the space for courses or guests or help park's workers. Improving the house's state it's an extra task volunteers can do like hand making the shelves for the bathrooms or creating informative posters for the walls.



FOREST FAIR

Forest fair (fira del bosc) is a nature related fair that is organized by Sant Celoni's municipal council and it happens every year. Volunteers of Montseny Bird Station participate with a bird related activity in Fontmartina station. People are invited for a demonstration and explanation of the professional ringing.



PROJECT MIGRACIÓ

Project migració is an ICO's (Catalan Ornithological Institute) initiative focused on collecting information on migratory birds in Catalonia by scientific ringing. As a consequence, it's possible to obtain long-term migration paths trends of the birds and changes in their movements impacted by food sources or weather conditions. This project lasts from August to November and through organized help from various professional ringers it is possible to maintain the station active everyday. Montseny Bird Station participates in the project at Bird Station in Canal Vell for one week. It gives volunteers an opportunity to learn a lot of new information about different species and help to collect necessary data.

